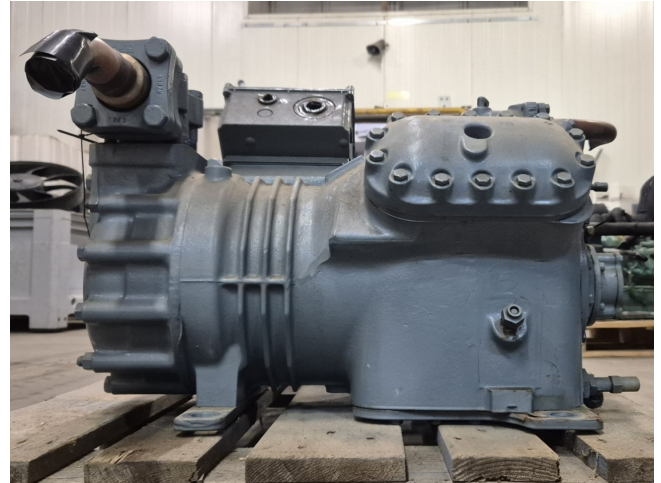


DWM D8RH1-2500-AWM/D

Specifications

Marka	DWM
Typ	D8RH1-2500-AWM/D
Czynnik chłodzący	Freon
kW at 0°C/+40°C	73,9*
kW at -5°C/+40°C	62,0
kW at -10°C/+40°C	51,6
kW at -20°C/+40°C	42,4
kW at -30°C/+40°C	27,6
Okno widokowe	✓
m ³ / h	71 m ³ /h
Uwagi	*Capacity based on +5°C/+40°C
Rozmiary	700x560x500 mm (LxWxH)
Stock	1



Description

Used DWM D8RH1-2500-AWM/D

Used DWM D4RH1-2500-AWM/D semi-hermetic reciprocating compressor on Freon with a sight glass. The compressor has a displacement of 71 m³/h.

*Why choose for HOSBV? We are not only the largest used refrigeration specialist in Europe, but also, we deliver all equipment including an extensive test, warranty and an industrial cleaning. *Optionally we can also perform a new paint job and arrange the logistics.

